



## Licorice root extract as corrosion inhibitor for tin in sodium chloride solutions

M. Abdallah<sup>1,2</sup>, A. Y. El-Etre<sup>1,\*</sup>, E. M. Kamar<sup>1</sup> and Salah Eid<sup>3,1</sup>

<sup>1</sup>Chemistry Department, Faculty of Science, Benha University, Benha, Egypt

<sup>2</sup>Chemistry Department, Faculty of Applied Sciences, Umm Al-Qura University, Makkah, Saudi Arabia

<sup>3</sup>Chemistry Department, College of Science and Arts, AlGurayat, Jouf University, AlGurayat, KSA

### Abstract

The corrosion behavior of tin electrode in 0.6 M NaCl solution as well as the effect of addition aqueous extract of licorice root were investigated using potentiodynamic techniques. It was found that the inhibition efficiency increases as the concentration of extract is increased. The inhibitive action of the extract was interpreted in view of adsorption of the extract components at the tin surface. The results showed that the adsorption follows Freundlich adsorption isotherm. The negative value of free energy of adsorption suggests a spontaneous process. Moreover, the addition of licorice root extract increases the resistance of tin toward pitting corrosion.

**Keywords:** Corrosion inhibitor, Tin, Licorice root, Natural products.

Received; 5 April 2020, Revised form; 18 May 2020, Accepted; 18 May 2020, Available online 1 July 2020.

### 1. Introduction

The corrosion studies of tin are closely related to its wide application in industry. The corrosion behavior of tin has been studied galvanostatically and potentiodynamically in different media [1-13]. Many organic compounds have been used as corrosion inhibitors. Most organic compounds used are extremely expensive and hazardous in nature. Trials were made to find very low cost, non-toxic, natural and eco-friendly inhibitors for protection of metals and alloys against corrosion in aqueous solutions [14-22].

The present work aims to study the corrosion behavior of tin in 0.6 M NaCl and the effect of addition aqueous extract of Licorice root [7, 23-24] as an inhibitor.

### 2. Experimental

The working electrode was made of tin rods (99.999%) axially embedded in Araldite holders to obtain an exposed circular area of 0.53 cm<sup>2</sup>. Before being used, the electrodes were polished successively with different emery papers until 1200 grads, degreased with acetone and then rinsed with distilled water. A Pt foil was used as a counter electrode. The potential was measured against a saturated calomel electrode (SCE) as a reference. All solutions were freshly prepared using analytical grade chemicals and distilled water. Dry licorice root was finely divided and extracted in water for 48 hours. The filtrate was evaporated in a steam bath and the solid residue was left overnight in open air for complete dryness. Glycyrrhizin is the main component [7, 23-24], its structure present in fig. (1). A stock solution was prepared, by weight, from the collected solid and used to prepare the desired concentration by dilution. All experiments were carried out at room temperature 25 ± 1°C. Potentiostatic polarization experiments were carried out using a PS remote potentiostat with PS6 software [14].

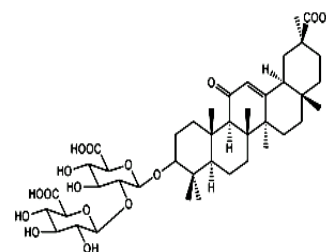


Fig (1): Glycyrrhizin structure

### 3. Results and discussion

#### 3.1. Potentiodynamic polarization

Fig. 2 represents the anodic and cathodic polarization curves of tin electrode in 0.6 M NaCl solutions devoid of and containing different concentrations of licorice root extract. Inspection of the Figure reveals that the polarization curves shift toward lower current density values upon the addition of the extract.

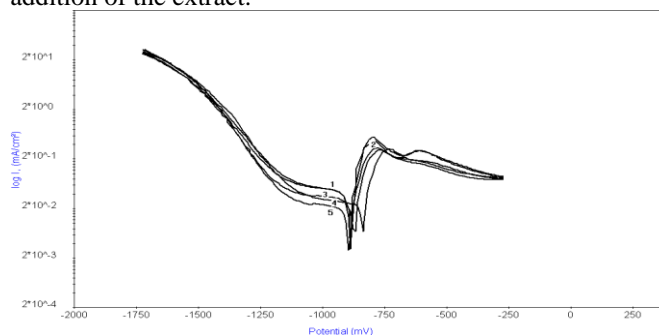


Fig (2): polarization curves for tin electrode in 0.6 M NaCl solution in presence of different concentrations of licorice root extract at scan rate 10 mV/sec. (1) 0, (2) 1000, (3) 2000, (4) 2500 and (5) 3000 ppm.

This behavior reflects the inhibitive action of licorice root extract. The corrosion parameters of tin electrode in the free and inhibited NaCl solutions were obtained from the curves of Fig. 2 and given in Table 1. The data in Table 1 show that

the corrosion current density is markedly decreased upon addition of the extract. Moreover, the values of cathodic Tafel constants were affected as the concentration of extract was increased. These findings suggest that licorice root extract acts as slightly cathodic inhibitor [16].

Table (1): Electrochemical parameters of tin in 0.6 M NaCl in presence of different concentrations of Licorice root.

Inh. conc. (ppm)	$\beta_a$ mV. dec <sup>-1</sup>	$\beta_c$ mV. dec <sup>-1</sup>	$E_{corr}$ mV (SCE)	$I_{corr}$ $\mu A/cm^2$	$\theta$	%IE
0	66.37	-1003.70	-886	17.130	-	-
1000	55.23	-99.70	-886	13.260	0.2559	25.59
2000	61.87	-815.48	-866	10.994	0.3582	35.82
2500	79.22	-560.08	-835	9.798	0.4280	42.80
3000	61.9	-372.16	-896	5.793	0.6618	66.18

### 3.2. Adsorption behavior

The inhibiting action of licorice root to tin corrosion could be attributed to the adsorption of its components on the metal surface. The adsorbed molecules form a barrier between the aggressive medium and the metal surface. The inhibition efficiency is directly related by the fraction of surface covered by the adsorbed molecules ( $\theta$ ). Therefore,  $\theta$  was calculated as  $IE/100$  and its values corresponding to different licorice root concentrations were given in tables (1). Inspection of these data reveals that, the value of  $\theta$  increases as the additive concentration is increased.

To study the adsorption behavior of licorice root on tin surface in the given medium, the adsorption isotherm must be defined. This result suggests that the adsorption of licorice root components on tin surface in NaCl solution follows Freundlich adsorption isotherm and is given by the general equation:

$$\theta = K.C^n$$

or alternatively by:

$$\log \theta = \log K + n \log C$$

where K and C are the equilibrium constant of adsorption process and additives concentrations, respectively.

A plot  $\log \theta$  against  $\log C$  gives a straight line of intercept,  $\log K$ , this plot is shown in Fig. (3).

The equilibrium constant of adsorption K is related to the standard free energy of adsorption, equation [15]:

$$K=1/55.5 \exp (- \Delta G_{ads}^o /RT)$$

where T is the absolute temperature and R is the gas constant (8.314 J. mol<sup>-1</sup>.K<sup>-1</sup>). The numerical value 55.5 is the concentration of water in mol.L<sup>-1</sup> which will be replaced with 1000 g.L<sup>-1</sup> (which is the unit used to determine the additive concentration) in our calculations [20]:

$$K=1/1000 \exp (- \Delta G_{ads}^o /RT)$$

The equilibrium constant and the adsorption free energy of licorice root extract adsorbed on the surface of tin 0.6 M NaCl are 0.239 and -13.57 kJ. mol<sup>-1</sup>.K, respectively. The standard free energy change of adsorption is associated with water adsorption/desorption equilibrium which forms an important part in the overall free energy changes of adsorption. The negative value of  $\Delta G_{ads}^o$  indicates that the

adsorption process of these compounds on the metal surface is spontaneous one. Moreover, the small value of free energy of adsorption suggest a physical adsorption of the licorice root compounds on tin surface [21].

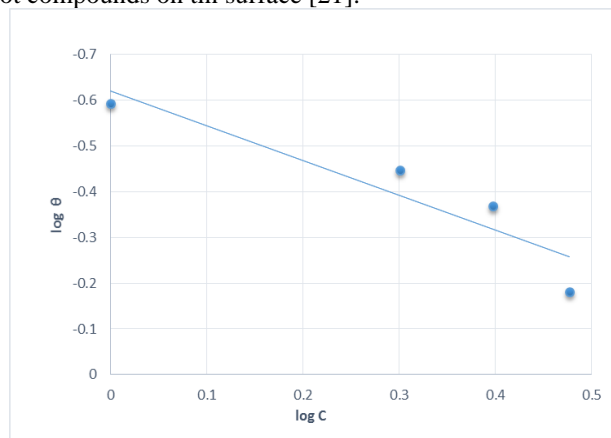


Fig (3): The relation between  $\log \theta$  and  $\log C$ , g/L for tin electrode in 0.6 M NaCl.

### 3. 3. Potentiodynamic anodic polarization

The effect of increasing concentration of the extract on the potentiodynamic anodic polarization of tin in 0.6 M NaCl at scan rate of 1mV/s is illustrated in Fig. 4. It was found that increasing the concentration of licorice root causes a slight shift of the pitting potential into noble direction indicating an increased resistance to pitting attack [7].

The anodic shift of pitting potential increases as the concentration of licorice root extraction is increased. Straight line relationship is obtained between  $E_{pit}$  and  $\log C_{inh.}$  (Fig. 5) according to the equation [7]:

$$E_{pit} = a + b \log C_{inh.}$$

Where a and b are constants which depend on both the type of additive and the nature of the electrode.

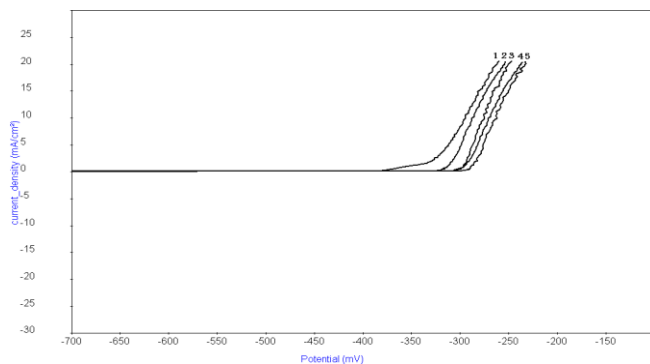


Fig (4): Potentiodynamic anodic polarization curves for tin electrode in 0.6 M NaCl and different concentrations of licorice root extract at scan rate 1 mV/sec. (1) 0, (2) 1000, (3) 2000, (4) 2500 and (5) 3000 ppm.

#### 4. Conclusion

The aqueous extract of licorice root provides a good protection for tin against general corrosion in sodium chloride solution as well as pitting corrosion. The inhibition

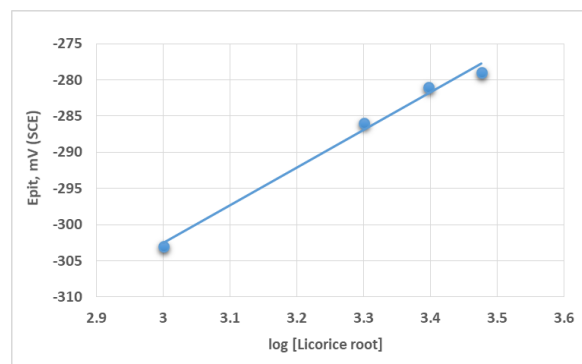


Fig (5): The relation between the pitting potential ( $E_{pit}$ ) and log C, ppm.

#### References

- [1] Pugh M, Warner L.M., Gabe D.R., Some passivation studies on tin electrodes in alkaline solutions, *Corros. Sci.* 7 (1967) 807.
- [2] Hampson N., Spencer N.F., Anodic Behaviour of Tin in Potassium Hydroxide Solution. *Br. Corros. J.* 3, 1-6 (1968).
- [3] Ammar I.A., Darwish S., Khalil M.W., El-Taher S., A review on the electrochemistry of tin, *Materials Chemistry and Physics*, 21(1), 1-47 (1989)
- [4] Dickinson T., Lotfi S., The nature and standard potential of the stannite ion in sodium hydroxide solutions, *Electrochim. Acta* 23 (10), 995- 999 (1978).
- [5] Refaey S.A.M., AbdEl Rehim S.S., Inhibition of chloride pitting corrosion of tin in alkaline and near neutral medium by some inorganic anions, *Electrochimica Acta* 42 (4), 667-674 (1997)
- [6] Kapusta S.D., Hickerman N., Anodic passivation of tin in slightly alkaline solutions, *Electrochim. Acta* 25(12), 1625- 1639 (1980)
- [7] Abdallah M., El-Etre A. Y., Abdallah E., and Salah Eid; Natural Occurring Substances as Corrosion Inhibitors for Tin in Sodium Bicarbonate Solutions., *Journal of the Korean Chemical Society*, 53 (5) 485-490 (2009).
- [8] Abd El Rehim S.S., El Samahi A.A., El Sayed A., *Br. Corros. J.* 20 (1985) 198.
- [9] Abd El Rehim S.S., Taha F., Saleh M.B., Mohamed S.A., *Collect Czech. Chem. Commun.* 58 (1993)2013.
- [10] Hassan H.H., Abd El Rehim S.S., Mohamed N.F., Role of  $\text{ClO}_4^-$  in breakdown of tin passivity in NaOH solutions, *Corros. Sci.* 44(1), 37– 47 (2002).
- [11] Abd El Aal M.S., Osman A.H., Anodic Polarization of Tin, Nickel, and a 65/35 Tin-Nickel Alloy in Alkaline Media Containing Halide Ions, *Corros., NACE* 36, (11) 591-596 (1980).
- [12] Drogowska M., Menard H., Brossard L., Electrochemical behaviour of tin in bicarbonate solution at pH 8, *J. Appl. Electrochem.* 21, 84-90 (1991).
- [13] Gervasi C.A., Varela F.E., Vilche J.R., Alvarez P.E., Investigations of the electroreduction process of anodic films grown on tin in carbonate-bicarbonate solutions, *Electrochim. Acta* 42(4), 537-547 (1997).
- [14] EL-Etre A. Y., Wagdy I. El-DougDoug, Salah Eid and Ahmed N. El-Din, Synthesis and Inhibition Effect of Two New Fatty Amido-Cationic Surfactants on Carbon Steel Corrosion in 1 M HCl Solution, *Journal of Basic and Environmental Sciences*, 3, 70-84 (2016)
- [15] Salah Eid; Measurement Hydrogen produced from magnesium corrosion in hydrochloric acid and the effect of addition triton x-100 surfactant on the hydrogen production, *Journal of Surfactants and Detergents*, 22, 153-160. (2019)
- [16] Sobhi M., Salah Eid, Chemical, electrochemical and morphology studies on Methyl hydroxyethyl cellulose as green inhibitor for corrosion of copper in hydrochloric acid solutions, *Protection of Metals and Physical Chemistry of Surfaces*, 54(5), 893–898 (2018)

- [17] Mabrouk E.M., Eid S., Attia M.M., Corrosion inhibition of carbon steel in acidic medium using azo chromotropic acid dye compound, *Journal of Basic and Environmental Sciences* 4, 351-355 (2017)
- [18] El-Etre A. Y., Gad El-karim I.A., Ibrahim S. A., El-kattan F. A., Preparation of Amino nictino nitril and its application as corrosion inhibitor for carbon steel, *Journal of Basic and Environmental Sciences* 4, 226-235 (2017)
- [19] El-Etre A. Y., Ahmed H. Tantawy, Salah Eid, Doaa F. Seyam, Corrosion Inhibition of Aluminum by Novel Amido-Amine Based Cationic Surfactant in 0.5 M HCl Solution, *Journal of Basic and Environmental Sciences* 2, 128-139 (2017)
- [20] Abdallah M., Kamar E. M., Salah Eid and El-Etre A. Y, Animal glue as green inhibitor for corrosion of aluminum and aluminum-silicon alloys in sodium hydroxide solutions. *Journal of Molecular Liquids*, 220, 755–761 (2016)
- [21] Abdallah M., Kamar E. M., El-Etre A. Y., Salah Eid, Gelatin as Corrosion Inhibitor for Aluminum and Aluminum Silicon Alloys in Sodium Hydroxide Solutions. *Protection of Metals and Physical Chemistry of Surfaces* 52 (1), 148 (2016)
- [22] Wagdy EL-Dougdoug, Salah Eid, Ahmed Zaher A., Ali.Y. El-Etre. Inhibition of carbon steel corrosion in aqueous solutions using some fatty amido-cationic surfactant. *Journal of Basic and Environmental Sciences* 3, 55– 64 (2016)
- [23] M.A.Deyab, Egyptian licorice extract as a green corrosion inhibitor for copper in hydrochloric acid solution, *Journal of Industrial and Engineering Chemistry*, 22(2015) 384-389
- [24] E.Alibakhshi, M.Ramezanzadeh, S.A.Haddadi, G.Bahlakeh, B.Ramezanzadeh, M.Mahdavian, Persian Liquorice extract as a highly efficient sustainable corrosion inhibitor for mild steel in sodium chloride solution, *Journal of Cleaner Production*, 210 (2019) 660-672